

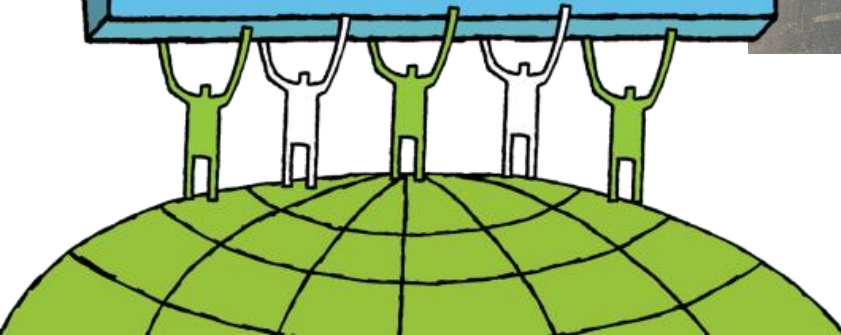
# *The Converging World*

Supporting sustainable communities

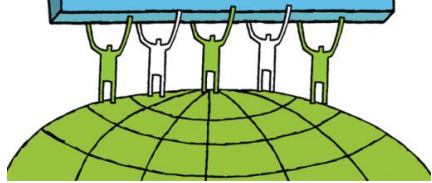
‘Power to the People’



THE CONVERGING WORLD  
WE ARE ALL CONNECTED



THE CONVERGING WORLD  
WE ARE ALL CONNECTED



## The Converging World Story – From Old to New

---



+



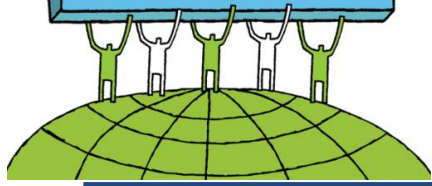
=



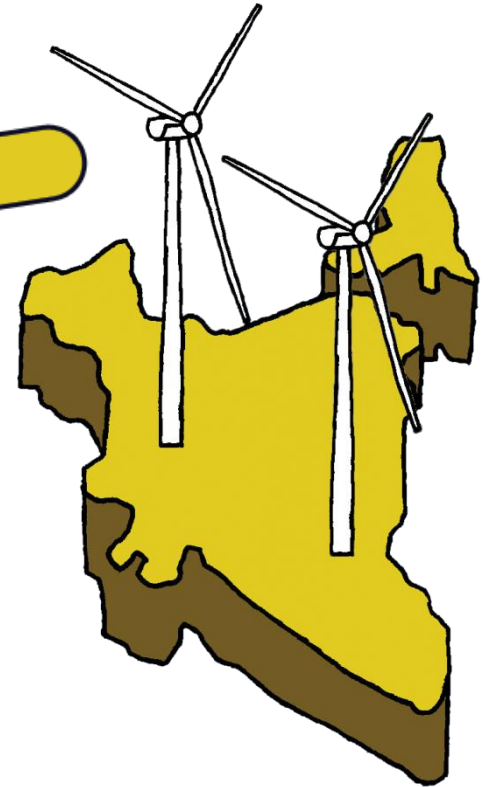
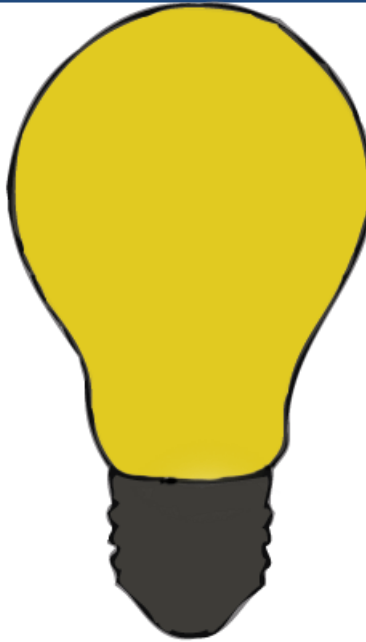
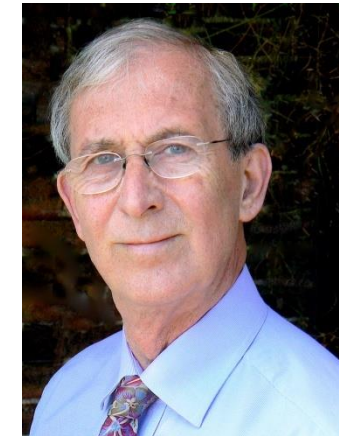
John enacting the role of William Shipley  
An 'US' community



THE CONVERGING WORLD  
WE ARE ALL CONNECTED

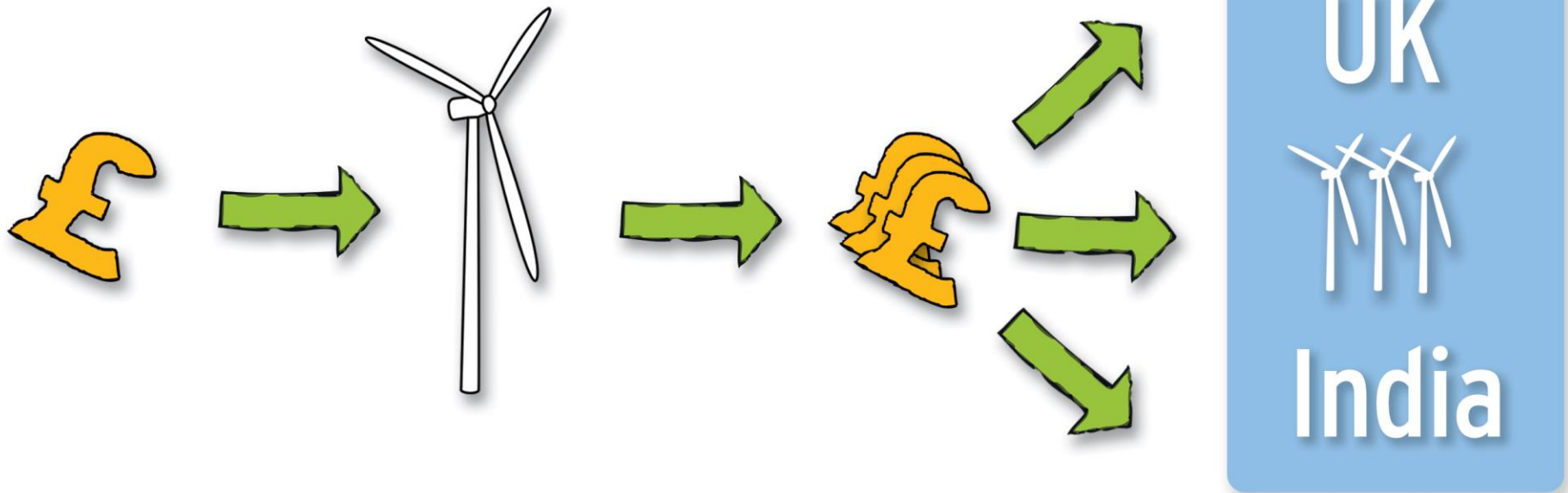


John had an idea to 'invest' in wind farms and use the funds to support social and environmental initiatives from the sale of electricity



THE CONVERGING WORLD  
WE ARE ALL CONNECTED

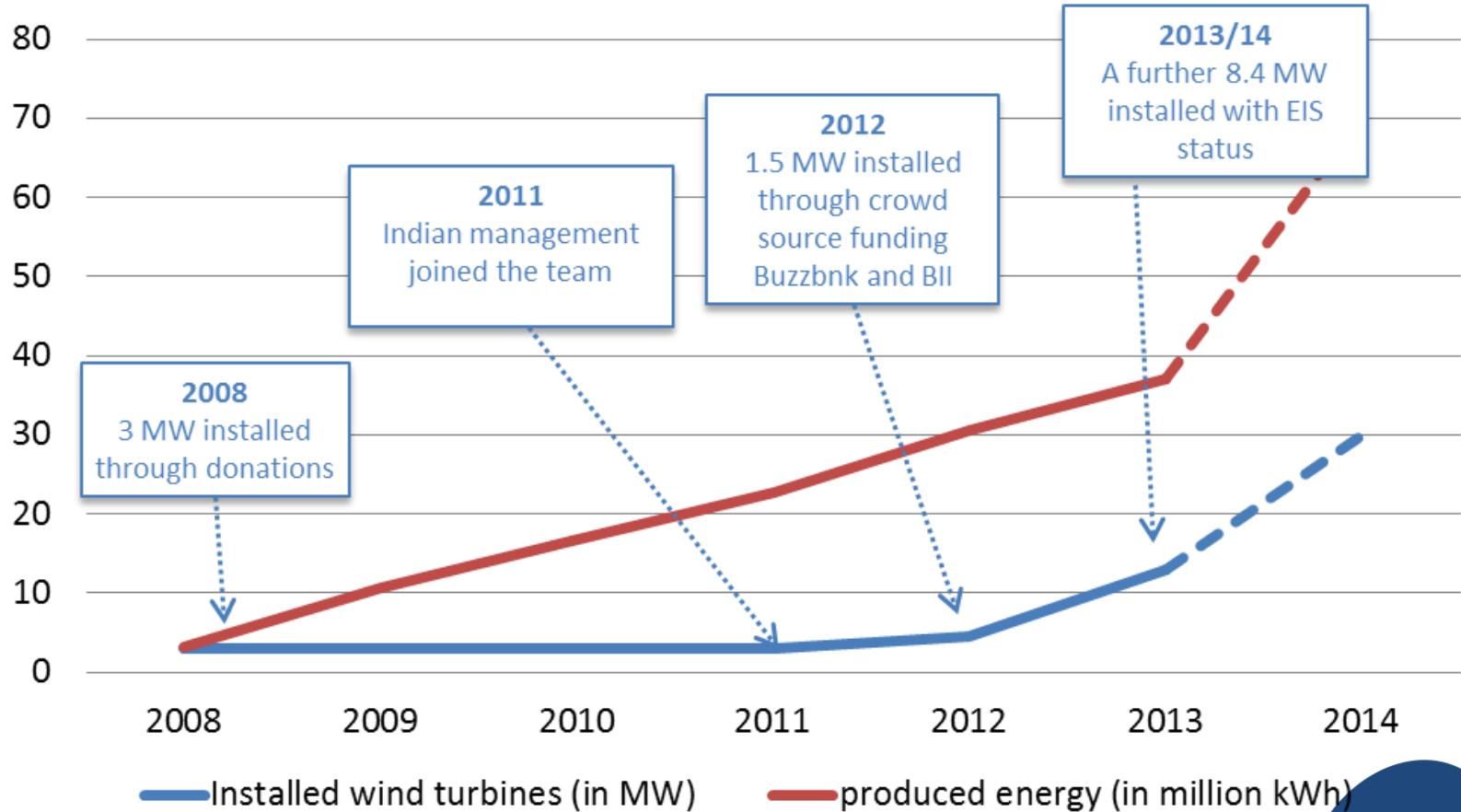
# The Big Idea



We are linking different communities in the UK with communities in India to work on tackling climate change and converging on One Planet Living

# The story so far

## Milestones and Renewable Energy Generated



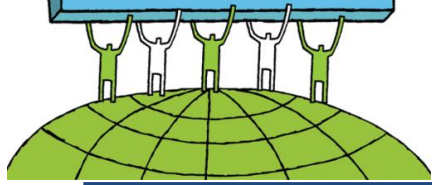
Our target is 200MW over the next 3-5 years

THE CONVERGING WORLD  
WE ARE ALL CONNECTED

Clean energy  
generated to date  
+70 million kWh

CO<sub>2</sub> emissions  
avoided  
+60,000 tonnes





# Social returns on Investment

SROI % is calculated using social cost of carbon £35/tCO<sub>2</sub>, £1/m<sup>3</sup> of water and actual £ directed to SEF

Avoided water when compared to Coal as per UN guidelines	702%
Avoided CO <sub>2</sub> as per UN guidelines and using Social Cost of Carbon	196%
Funds for programmes (Socio-Env Fund (SEF))	238%
	<i>Total</i> 897%
	<i>Equivalent return pa</i> 45%

This SROI does not include all the social benefits that come from how we spend the surplus funds.

SROI is much greater than reflected here

THE CONVERGING WORLD  
WE ARE ALL CONNECTED

# Charitable Programmes





# Access to affordable sustainable energy

- Low Carbon Development for Indian States
- Solar villages
- District wide owned community energy
- Solar villages
- 9 other states interested
- Cook stoves
- Solar installation at an orphanage



# Challenges in India for renewable energy development

- Finance – cost is high 12%-13%
- Infrastructure needs more investment
- Enforcing incentivised frameworks – ROC's (REC's)
- Interstate selling
- Navigating bureaucracy



# Challenges in India for community renewable energy development

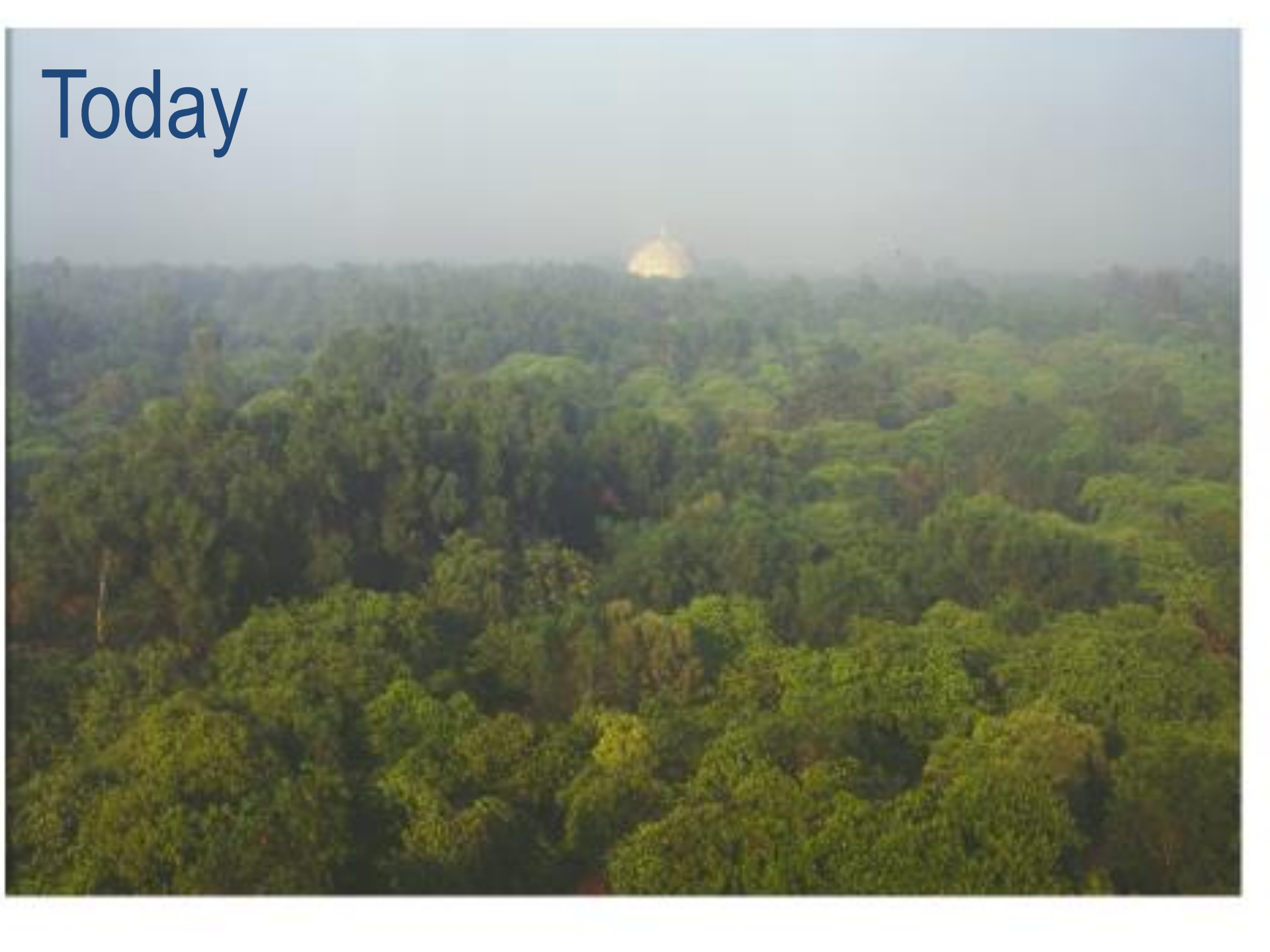


- Regulations do not allow for selling back to grid
- Feed in tariff only recently come in, in very few states
- Community ownership through sweat equity limits ownership, working through what the best model is
- Green bling versus other pressing needs – does it improve well being?

1969



Today



# THANK YOU

# The Converging World

Supporting sustainable communities.....Together

[www.theconvergingworld.org](http://www.theconvergingworld.org)

[wendystephenson@theconvergingworld.org](mailto:wendystephenson@theconvergingworld.org)

[johnpontin@theconvergingworld.org](mailto:johnpontin@theconvergingworld.org)



THE CONVERGING WORLD  
WE ARE ALL CONNECTED

